

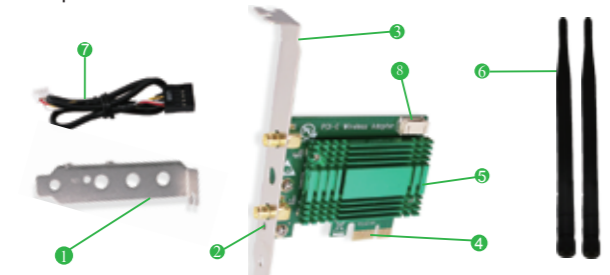


PCI Express Wireless Dual Band Wi-Fi Adapter

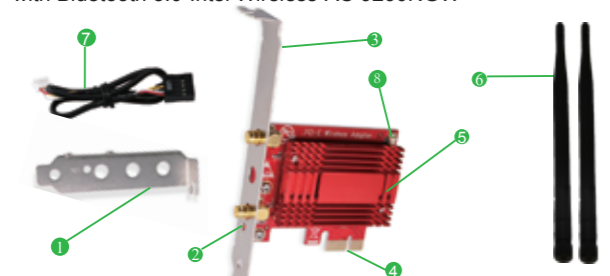
- AX3000 Intel WiFi 6 AX200NGW
- AC2030 Intel Wireless-AC 9260

Site:www.febsmart.com Contacts:support@febsmart.com

AX3000 PCIE WiFi 6 Wireless Dual Band 3000Mbps Network Adapter with Bluetooth 5.0-Intel Wireless WiFi 6 AX200NGW



AC2030 PCIE Wireless AC Dual Band 2030Mbps Wi-Fi Adapter with Bluetooth 5.0-Intel Wireless-AC 9260NGW



- 1 Low profile bracket
- 2 Activity Indicator
- 3 Standard profile bracket
- 4 PCIE interface
- 5 HeatSink
- 6 2X 5dBi Wi-Fi antenna
- 7 Bluetooth cable
- 8 Bluetooth connector

AX3000 Product Description:

AX3000 is based on Intel wireless WiFi 6 AX200NGW WiFi module.It supports latest 802.11 WiFi 6 technology,provide a dual band WiFi connection for desktop computers on 2.4GHz 574Mbps and 5GHz 2400Mbps with bluetooth 5.0.It is a cost-effective way to add wireless network and Bluetooth on PCs and servers for online gaming and HD videos treaming etc.

Product Tech Data:

WiFi Module: Intel WiFi 6 AX200NGW
Bluetooth Version: Dual Mode Bluetooth 5.0
Operation Frequency: 5GHz and 2.4GHz
Wireless Signal Type: 802.11 WiFi 6 Dual Stream
Working Mode: Wi-Fi Adapter (Receiver) and Wireless AP
Wireless Technology: TX Beamformee and MU-MIMO
Wireless Standard: IEEE802.11 WiFi 6,compatible with a/b/g/n/ac
Max Wi-Fi Speed: 2.4GHz 574Mbps,5GHz 160MHz 2400Mbps

System Requirements:

Need to install WiFi and bluetooth driver on Windows10 64bit
Need to compile on Linux Kernels 5.1+
NOT for other Windows systems and MAC systems.

Package List:

- | | |
|--------------------|------------------------|
| 1X AX3000 | 1X Mini CD |
| 1X User Manual | 1X Mounting Screw |
| 2X 5dBi Antennas | 1X Low Profile Bracket |
| 1X Bluetooth Cable | |

2

AC2030 Product Description:

AC2030 is based on Intel Wireless-AC 9260NGW WiFi module. It provide a wireless AC super fast speed, stable and little loss network connectivity on 2.4GHz 300Mbps and 5GHz 1730Mbps with Bluetooth 5.0 for desktop PCs.It is a cost-effective way to add wireless network and Bluetooth on PCs and servers for internet surfing,online gaming and HD video streaming etc.

Product Tech Data:

WiFi Module: Intel Wireless AC 9260NGW
Bluetooth Version: Dual Mode Bluetooth 5.0
Operation Frequency: 5GHz and 2.4GHz
Compatible Device: Standard and Mini Size PCs
Wireless Technology:2x2 MU-MIMO,TX Beamformee
Working Mode: Wi-Fi Adapter (Receiver) and Wireless AP
Wireless Standard: IEEE802.11AC,compatible with a/b/g/n
Max Wi-Fi Speed:2.4GHz 300Mbps,5GHz 160MHz 1730Mbps

System Requirements:

Need to install WiFi and bluetooth driver on Windows10 64bit
Need to compile on Linux Kernels 4.14+
NOT for other Windows systems and MAC systems.

Package List:

- | | |
|--------------------|--------------------------|
| 1X AC2030 | 1X Mini CD |
| 1X User Manual | 2X 5dBi Antenna |
| 1X Mounting Screw | 1X Lower Profile Bracket |
| 1X Bluetooth Cable | |

3

Step 2. Select Correct Driver from Mini CD for PCs. Open Mini CD then refer steps as below.

Windows 10 64bit Users:
AX3000 and AC2030 compatible with Windows 10 64bit system only.Both these two models share installation steps on Windows 10 64bit.So Windows users please click "WiFi Driver" and "Bluetooth Driver" from Mini-CD.

Linux Kernels Users:
1.AX3000 supports Linux Kernel 5.1+.Linux users please select from Mini-CD get source code:
Linux Driver-Intel AX200

2.AC2030 supports Linux Kernel 4.14+.Linux users please select from Mini-CD get source code:
Linux Driver-Intel 9260

Step 3. Install WiFi driver.

1.Double right-click the software and running software



WiFi Driver

8

2. Accept license,Click Install.

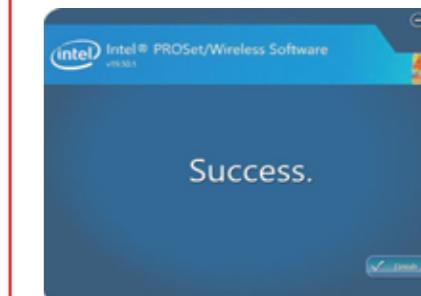


3. Waiting the installation.



9

4. Installation done. Restart PC.



Step 4. Install Bluetooth driver.

1.Double right-click the software and running software



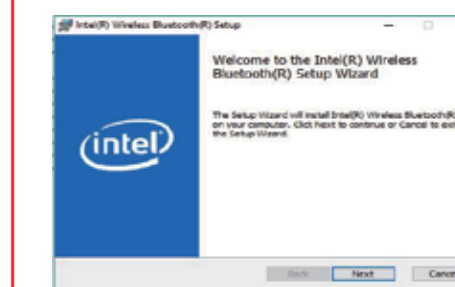
Bluetooth Driver

10

2. Click "Next"



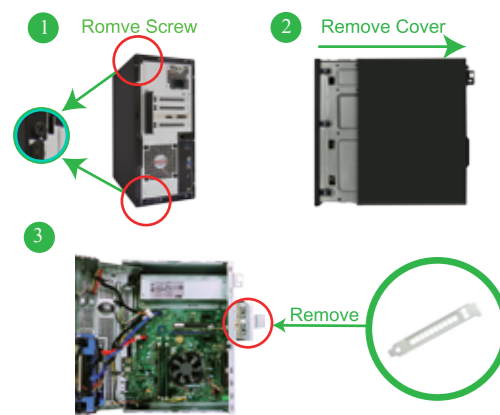
3. Click "Next"



11

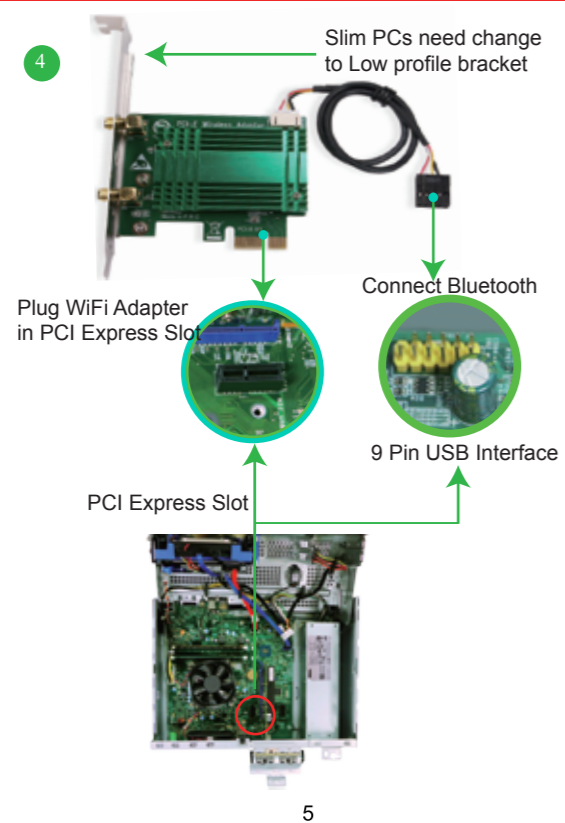
Install WiFi Adapter Hardware on PCs:

Step 1. Switch OFF,unplug computer from main socket,unplug power-cord and other connected peripheral device. Remove PC case cover.



Step 2. Find correct PCI express slot,insert this wireless bluetooth card into an empty PCI-E slot on mother board.Find USB 2.0 interface plug in the bluetooth cable.

4



5

Step 3. Screw in the antennas directly to wireless network card. If needed,the antennas can be ajusted and face to wireless AP's direction.It will improve the wireless network reception.Then reattach the PCs cover,put back all connected device and trun on computer.

5



Screw Antenna

6

How to get latest driver?

- 1.PCs have CD ROM please open Mini CD directly,refer install steps as below complete driver installation.
2. If computers can not read CD please try to download correct driver from our site www.febsmart.com or contact us at support@febsmart.com
- 3.Get driver from www.Intel.com,search "AX200NGW" or "Wireless-AC 9260 NGW" download driver for PCs.

Find best way to install driver

1. PCs is online.Have internet connection already. Link to www.intel.com, search "AX200NGW" or "Wireless-AC9260 NGW" find latest driver for Windows10 64bit and install driver to active this WiFi bluetooth card.
- 2.PCs is offline.No internet connection. Need to install driver from Mini CD and select correct driver by hand.Refer driver install steps as below.

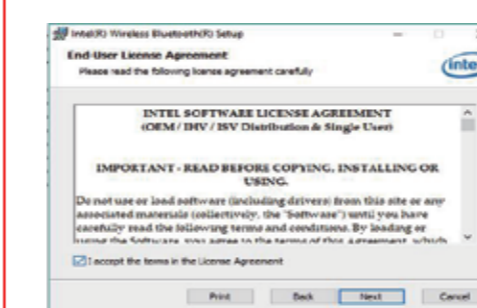
Install Driver on Linux and Windows 10 64bit System:

Step 1. Know PC System Version

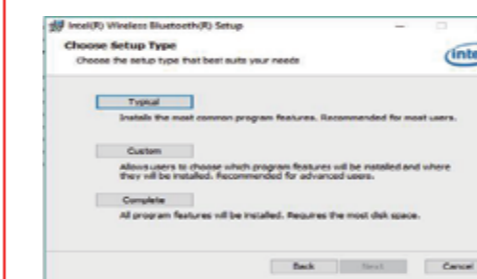
1.Windows 10-Desktop-Left click select "This PC"-Right click select "Propertis"-Check info "Windows Edition" and "System Type".Make sure Windows system is Windows10 64bit or WiFi bluetooth card will not works.

7

4. Accept license,Click Install.

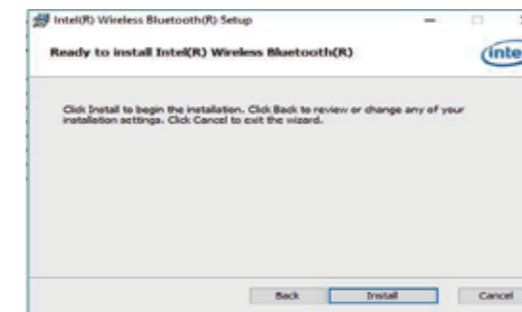


5. Choose setup type,Click "Typial".



12

6. Click "Install"



7. Click "Finish",Bluetooth driver installation done.



13

Connect to Bluetooth Device

Connect to Bluetooth device:

- 1.Locate the task bar in the bottom right corner of your desktop.
- 2.Click Bluetooth. icon. And follow windows reminder connect it to the Bluetooth device.

Connect to Internet

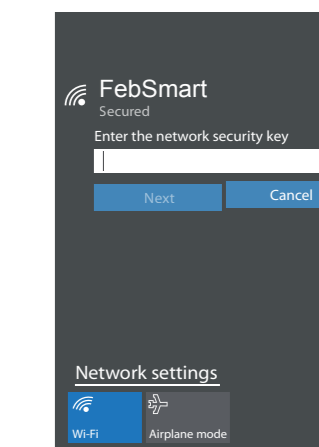
- 1.Locate the task bar in the bottom-right corner of desktop.
- 2.Select the wireless icon as below on Windows 10 64bit system.



Windows10

3. Select WiFi signal around PCs,fill correct password connect to it. Afterwards enjoy super speed internet.

14



Windows 10

How to contact with us ?

Tech-Support: support@febsmart.com
Ofical Site: www.febsmart.com
Latest Driver:www.intel.com

15

105G铜版纸+彩色印刷+折叠

成品尺寸: 110x85mm